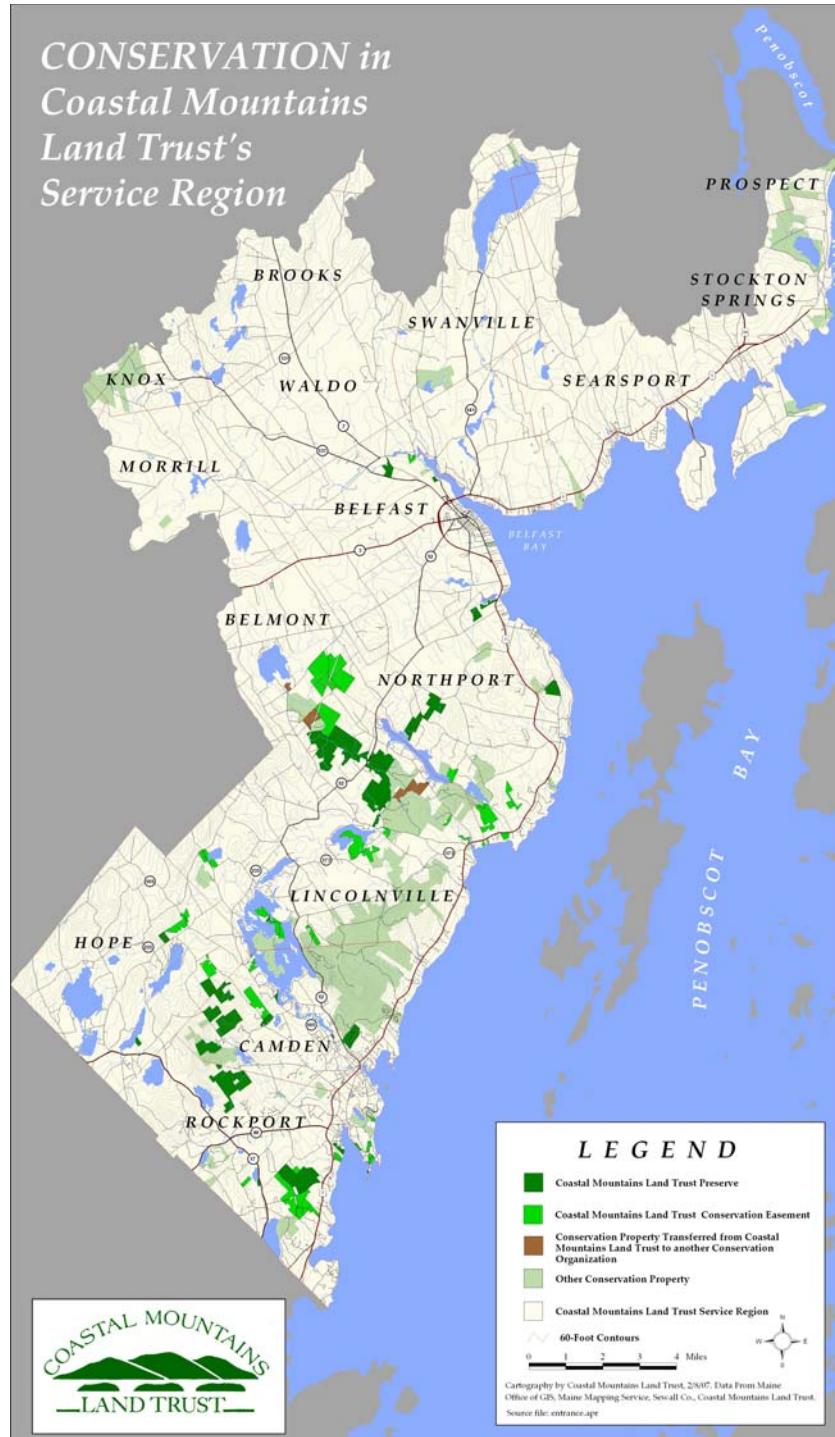


*CONSERVATION in
Coastal Mountains
Land Trust's
Service Region*



COASTAL MOUNTAINS LAND TRUST

WESTERN PENOBSCOT BAY, MAINE

- 5,900+ ACRES CONSERVED
- 47 PRESERVES
- 45 CONSERVATION EASEMENTS

OUR MISSION

- ESTABLISH A SYSTEM OF CONSERVATION LANDS THAT PERMANENTLY PROTECTS

- BIOLOGICAL DIVERSITY

- SCENIC LANDSCAPES, AND

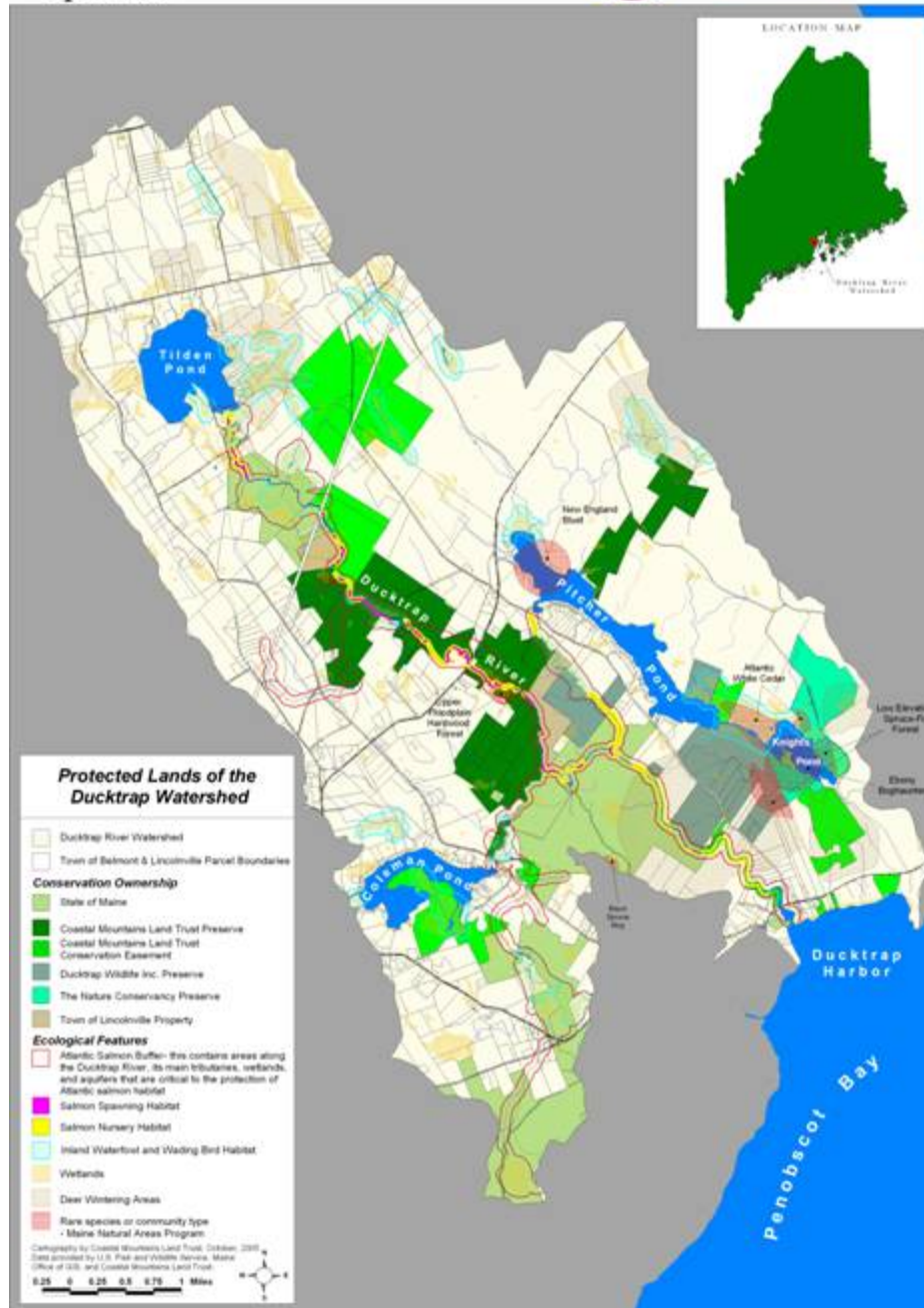
- AGRICULTURAL, FOREST, AND WATER RESOURCES

- PROMOTE AWARENESS OF THE VALUE OF LAND CONSERVATION

- PROVIDE OPPORTUNITIES FOR THE PUBLIC TO ENJOY AND EXPERIENCE NATURAL LANDS



Ducktrap River Watershed Conservation Lands April 2007



DUCKTRAP RIVER & WATERSHED CONSERVATION PLANNING

BY:

COASTAL MOUNTAINS LAND TRUST
US FISH AND WILDLIFE SERVICE
ME ATL. SALMON COMMISSION
THE NATURE CONSERVANCY

GOAL:

PROTECT FORESTED RIPARIAN
BUFFER, TRIBUTARIES, AND
WETLANDS ALONG RIVER TO
PRESERVE ATLANTIC SALMON
HABITAT

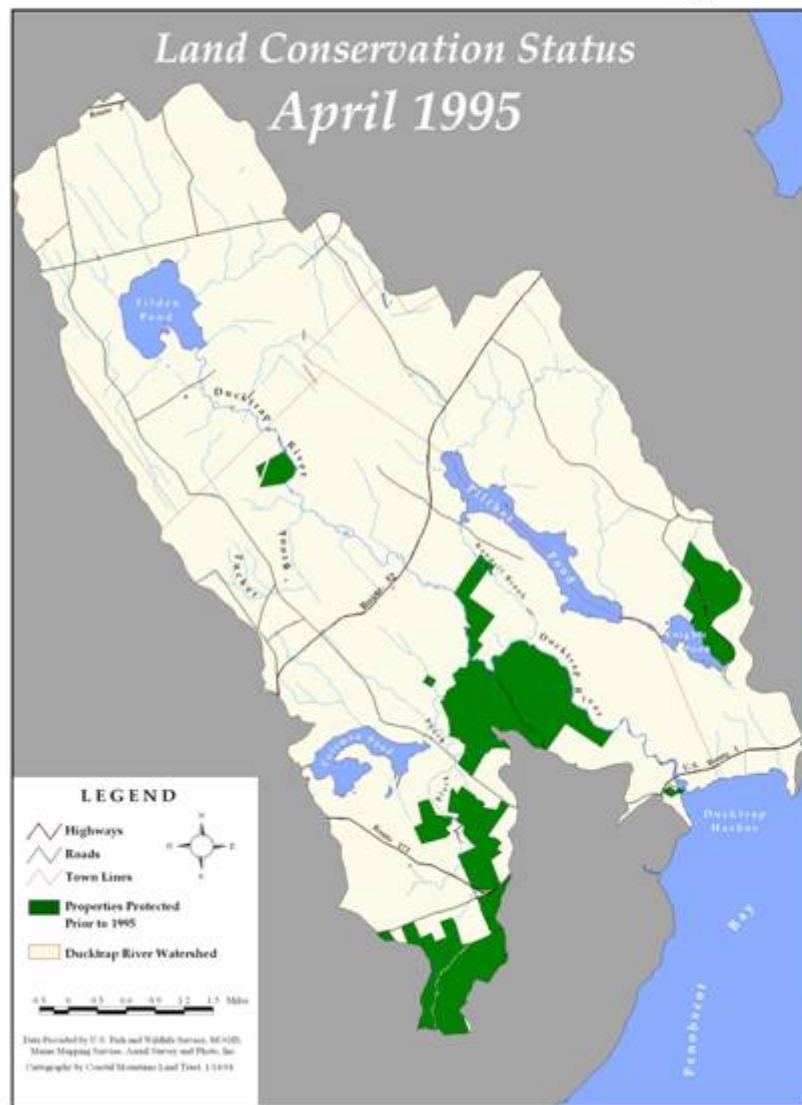
DUCKTRAP COALITION

COASTAL MOUNTAINS LAND TRUST
ATLANTIC SALMON COMMISSION
ATLANTIC SALMON FEDERATION
BELMONT PLANNING BOARD
CAMDEN HILLS STATE PARK
COLEMAN POND ASSOCIATION
DUCKTRAP RIVER KEEPERS
DUCKTRAP WILDLIFE PRESERVE
ISLAND INSTITUTE
LAND FOR MAINE'S FUTURE PROGRAM
LINCOLNVILLE CONSERVATION COMMISSION
MAINE CHAPTER OF THE NATURE CONSERVANCY
MAINE COAST HERITAGE TRUST
MAINE DEPARTMENT OF ENVIRONMENTAL PROTECTION
MAINE DEPARTMENT OF INLAND FISHERIES & WILDLIFE
MAINE DEPARTMENT OF MARINE RESOURCES
MAINE FOREST SERVICE
MAINE NATURAL AREAS PROGRAM
MIDCOAST AUDUBON SOCIETY
NATIONAL MARINE FISHERIES SERVICE
NATURAL RESOURCE CONSERVATION SERVICE
PITCHER POND ASSOCIATION
STATE PLANNING OFFICE
TANGLEWOOD 4-H CAMP AND LEARNING CENTER
TROUT UNLIMITED
U.S. FISH AND WILDLIFE SERVICE



CONSERVATION IN THE DUCKTRAP RIVER WATERSHED

Progress of the Ducktrap Coalition



Ducktrap River Watershed

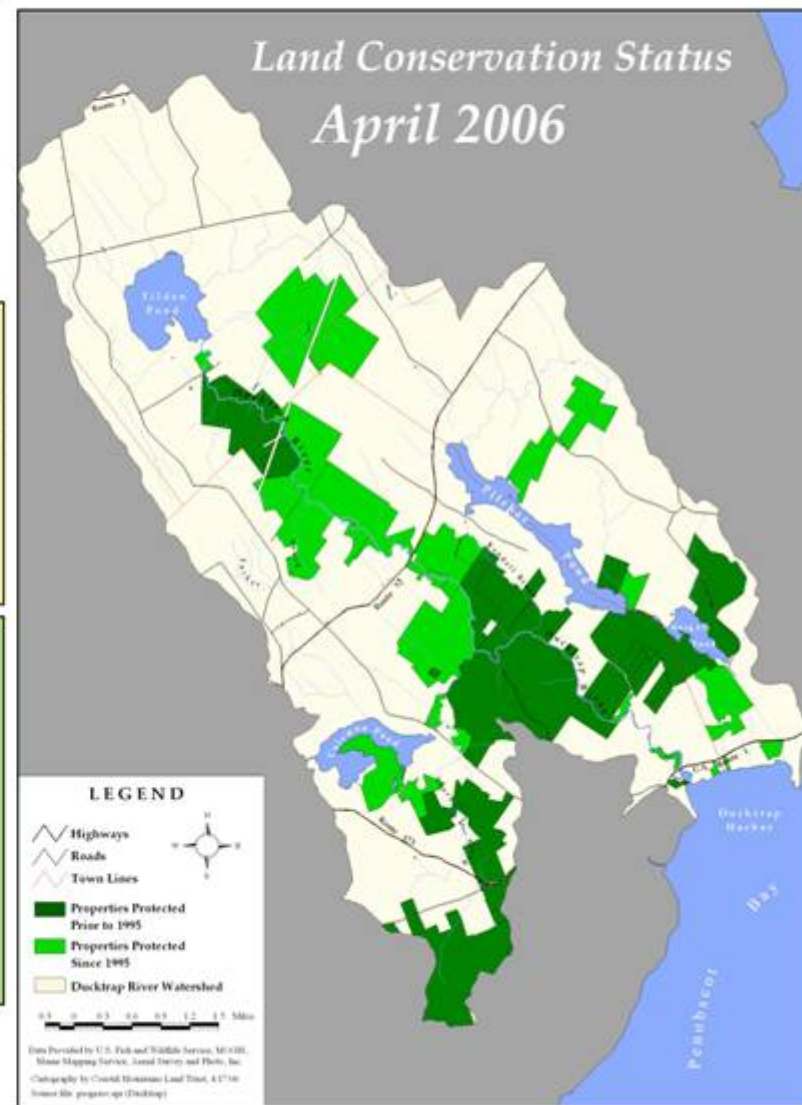
History of the Ducktrap Coalition:

The Ducktrap Coalition, coordinated by Coastal Mountains Land Trust and composed of 23 public, private, and local organizations, has pursued an innovative, comprehensive conservation program in the Ducktrap River Watershed. Established in 1995, the Coalition was adopted as the watershed council for the Ducktrap River in 1997 under the state of Maine's Atlantic Salmon Conservation Plan for Seven Maine Rivers. The Ducktrap River population of Atlantic salmon is one of the eight wild Atlantic salmon populations remaining in the United States, and is currently listed under the Federal Endangered Species Act. The Coalition has established a set of goals designed to protect salmon habitat that are being implemented by permanent land protection, watershed-based outreach and environmental education, active stewardship and monitoring of the watershed, and restoration of lands with damaged ecological functions. In addition, comprehensive goals have been set to protect existing natural communities and rare species that occur in the watershed, provide low-impact public access to the area, monitor, promote best management practices on production forest and agricultural lands, and conserve the scenic qualities of the watershed.

Ducktrap Coalition Members:

Coastal Mountains Land Trust, Coordinator
Atlantic Salmon Conservancy
Atlantic Salmon Federation
Belmont Planning Board
Canaan Hills State Park
Canaan Pond Association
Ducktrap Riverkeepers
Ducktrap Wildlife Preserve
Hemel Institute
Land for Maine's Future Program
Lewiston Conservation Commission
Maine Chapter of The Nature Conservancy
Maine Coast Heritage Trust
Maine Dept. of Environmental Protection
Maine Dept. of Inland Fisheries and Wildlife
Maine Dept. of Marine Resources
Maine Forest Service
Maine National Areas Program
Midcoast Audubon Society
National Marine Fisheries Service
National Resources Conservancy Service
Orono Park Association
State Planning Office
Tanglewood 4-H Camp and Learning Center
Trent University
U.S. Fish and Wildlife Service

*Formerly a Ducktrap Coalition member organization providing land to the Ducktrap River Watershed through conservation easements or conservation covenants.



A scenic view of a river flowing through a dense forest. The river is filled with white water rapids and is surrounded by lush green trees and vegetation. A wooden bridge made of logs spans the river in the background. The text is overlaid on the left side of the image.

ONGOING STEWARDSHIP

- ENDOWMENT

- ECOLOGICAL INVENTORY

- MANAGEMENT PLAN

 - RESTORATION OF VERNAL POOLS,
TRIBUTARIES

 - INVASIVE SPECIES CONTROL

- STAFF AND VOLUNTEER
STEWARDSHIP PROGRAM

LESSONS FROM THE DUCKTRAP: FIVE KEY ELEMENTS FOR SUCCESS

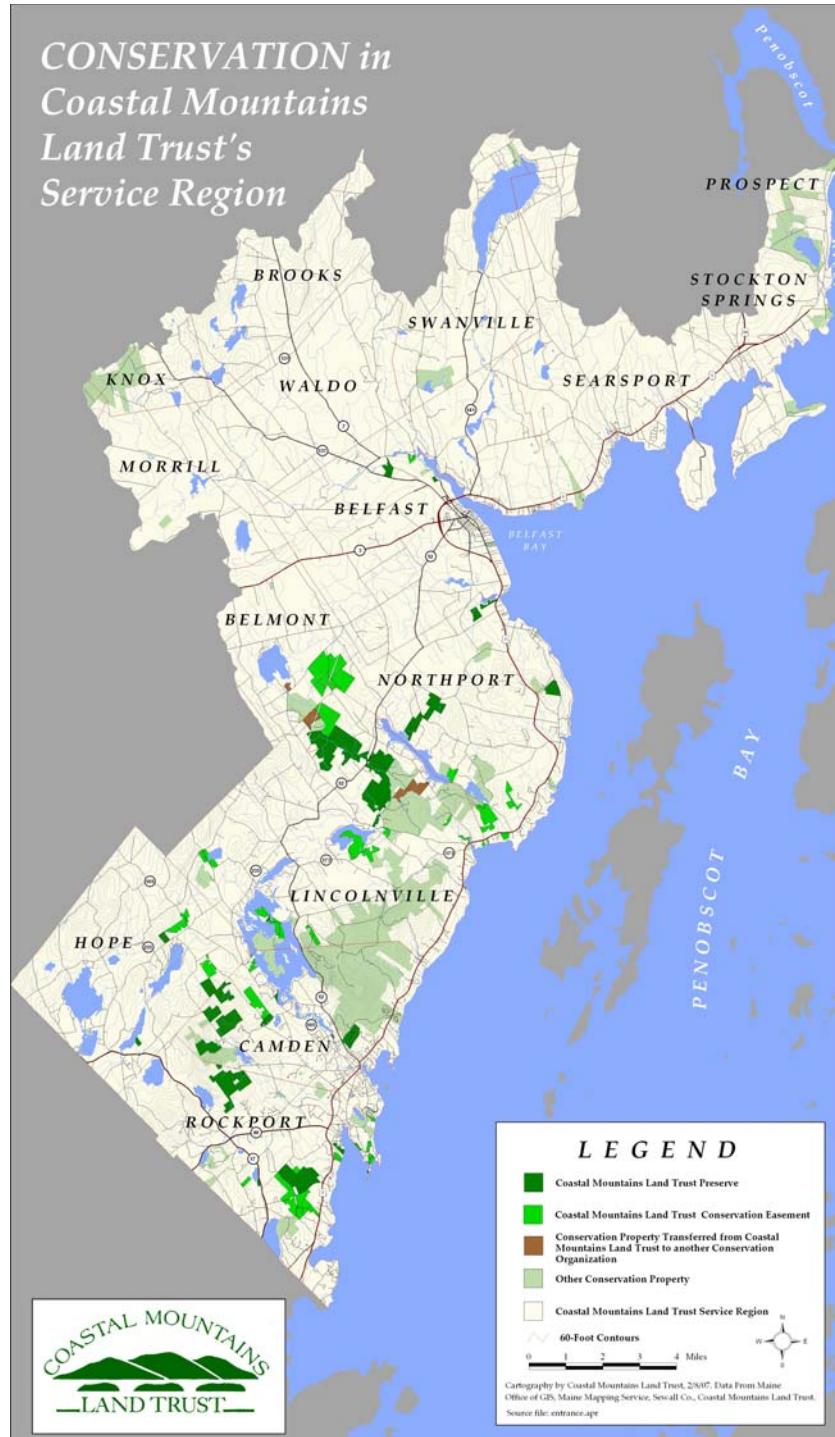


- ALWAYS COLLABORATE
- ACT AT WATERSHED SCALE
- SET AMBITIOUS GOALS
- RESPECT LANDOWNERS
- PLAN FOR PERPETUITY



BALD AND RAGGED MOUNTAINS

*CONSERVATION in
Coastal Mountains
Land Trust's
Service Region*



COASTAL MOUNTAINS LAND TRUST

OUR MISSION

- ESTABLISH A SYSTEM OF CONSERVATION LANDS THAT PERMANENTLY PROTECTS

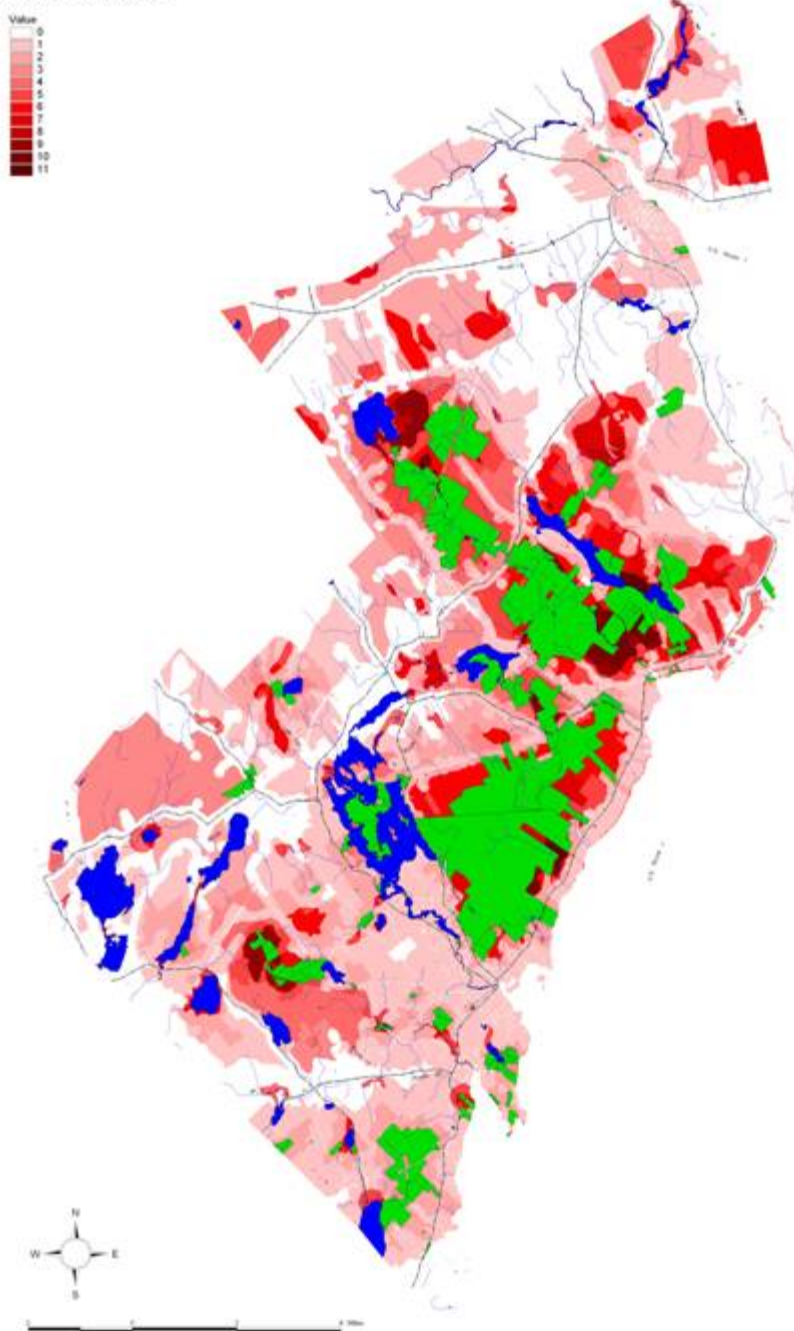
- BIOLOGICAL DIVERSITY
- SCENIC LANDSCAPES, AND
- AGRICULTURAL, FOREST, AND WATER RESOURCES

- PROMOTE AWARENESS OF THE VALUE OF LAND CONSERVATION

- PROVIDE OPPORTUNITIES FOR THE PUBLIC TO ENJOY AND EXPERIENCE NATURAL LANDS



Biodiversity 5/15/01



■ ESTABLISH A SYSTEM OF CONSERVATION LANDS THAT PERMANENTLY PROTECTS

■ **BIOLOGICAL DIVERSITY**

■ SCENIC LANDSCAPES, AND

■ AGRICULTURAL, FOREST, AND WATER RESOURCES

- UNDEVELOPED BLOCKS > 500 AC.

- EXEMPLARY HABITATS

- RARE SPECIES

- CONNECTIVITY TO CONSERVED LANDS



■ ESTABLISH A SYSTEM OF CONSERVATION LANDS THAT PERMANENTLY PROTECTS

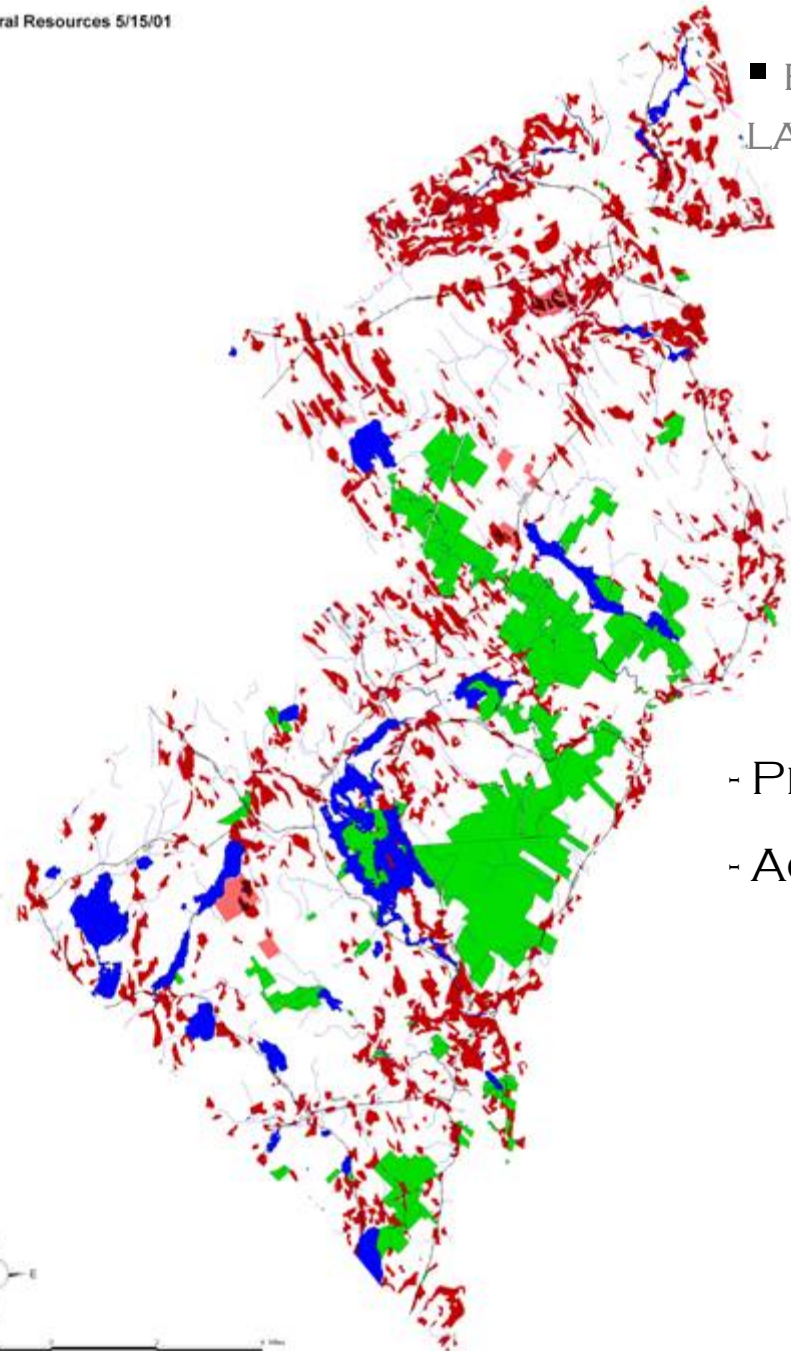
■ BIOLOGICAL DIVERSITY

■ SCENIC LANDSCAPES, AND

■ AGRICULTURAL, FOREST, AND WATER RESOURCES

- SCENIC SURVEY





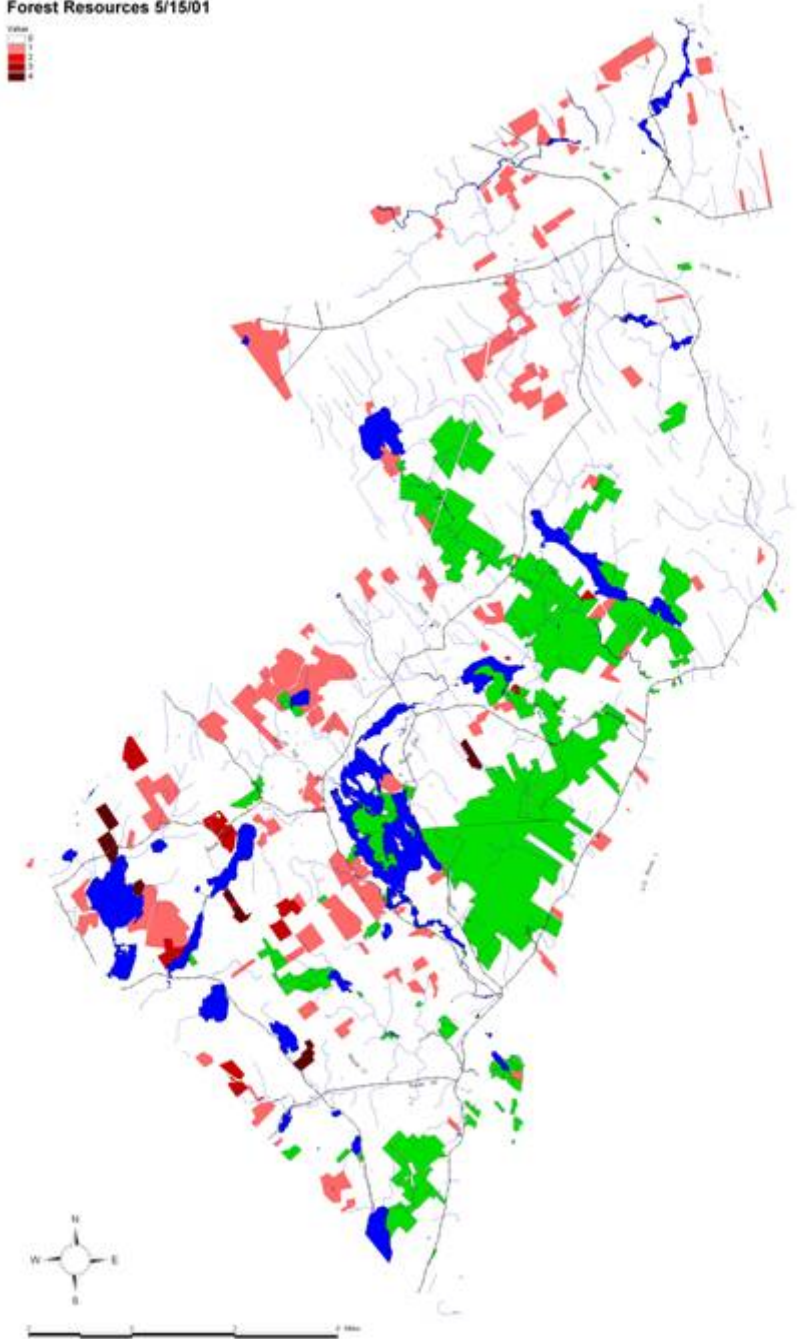
■ ESTABLISH A SYSTEM OF CONSERVATION
LANDS THAT PERMANENTLY PROTECTS

- BIOLOGICAL DIVERSITY
- SCENIC LANDSCAPES, AND
- AGRICULTURAL, FOREST, AND WATER
RESOURCES

- PRIME AGRICULTURAL SOILS

- ACTIVE FARMS

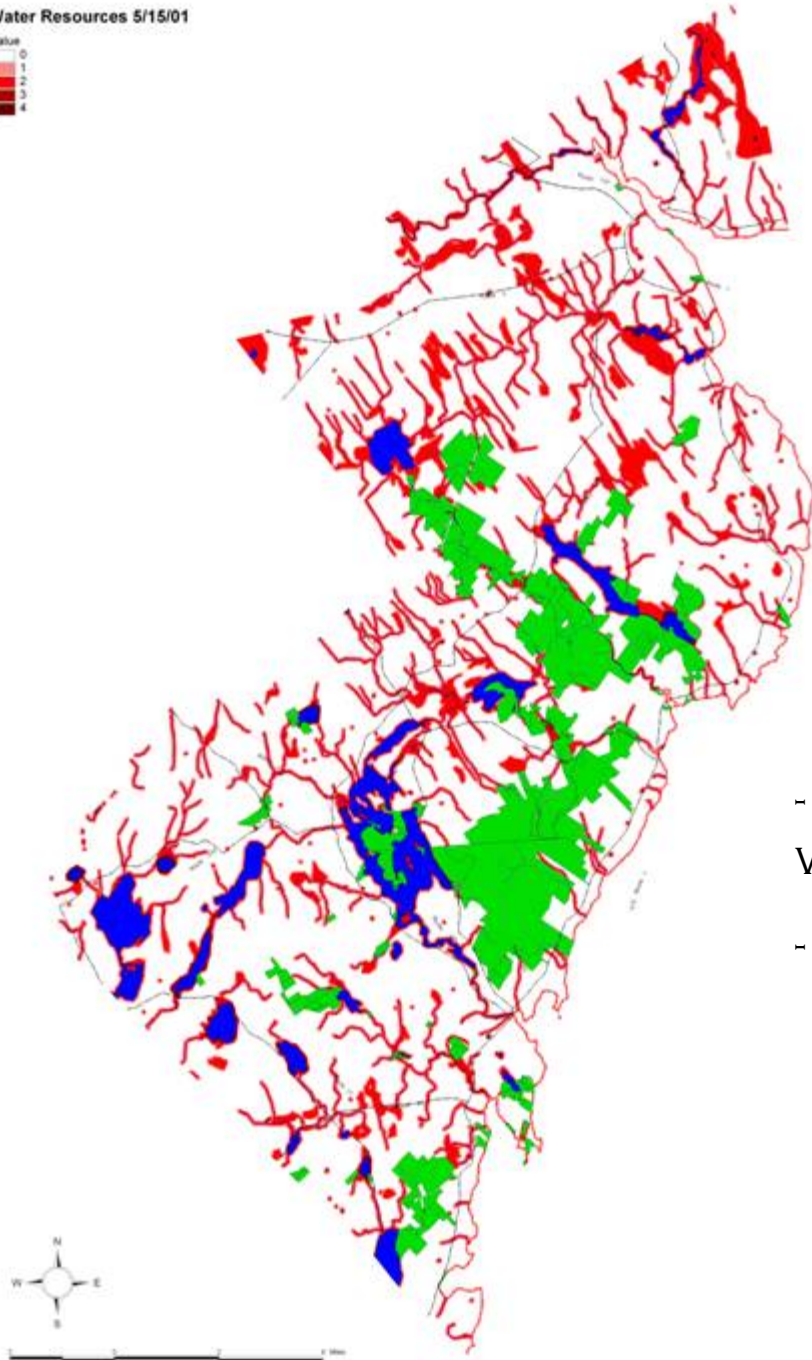
Forest Resources 5/15/01



■ ESTABLISH A SYSTEM OF CONSERVATION LANDS THAT PERMANENTLY PROTECTS

- BIOLOGICAL DIVERSITY
- SCENIC LANDSCAPES, AND
- AGRICULTURAL, **FOREST**, AND WATER RESOURCES

- CURRENT USE TAX PROGRAM
- GREEN CERTIFIED FOREST



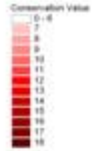
■ ESTABLISH A SYSTEM OF CONSERVATION LANDS THAT PERMANENTLY PROTECTS

- BIOLOGICAL DIVERSITY
- SCENIC LANDSCAPES, AND
- AGRICULTURAL, FOREST, AND **WATER RESOURCES**

- PROXIMITY TO PONDS, RIVERS, STREAMS, WETLANDS

- UNDEVELOPED PONDS = BONUS POINTS

Coastal Mountains Land Trust Conservation Planning
6/30/01 Draft



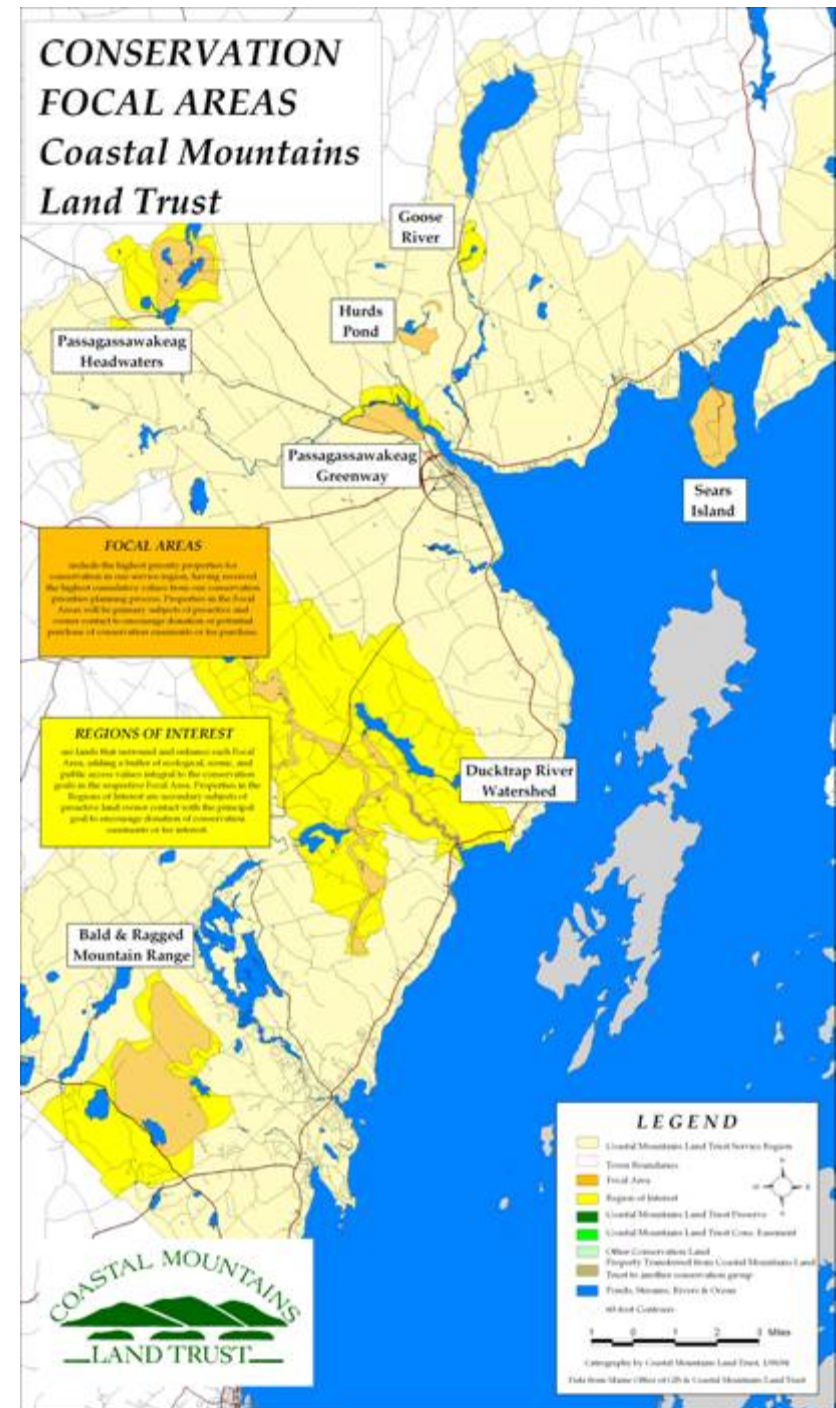
■ ESTABLISH A SYSTEM OF CONSERVATION LANDS THAT PERMANENTLY PROTECTS

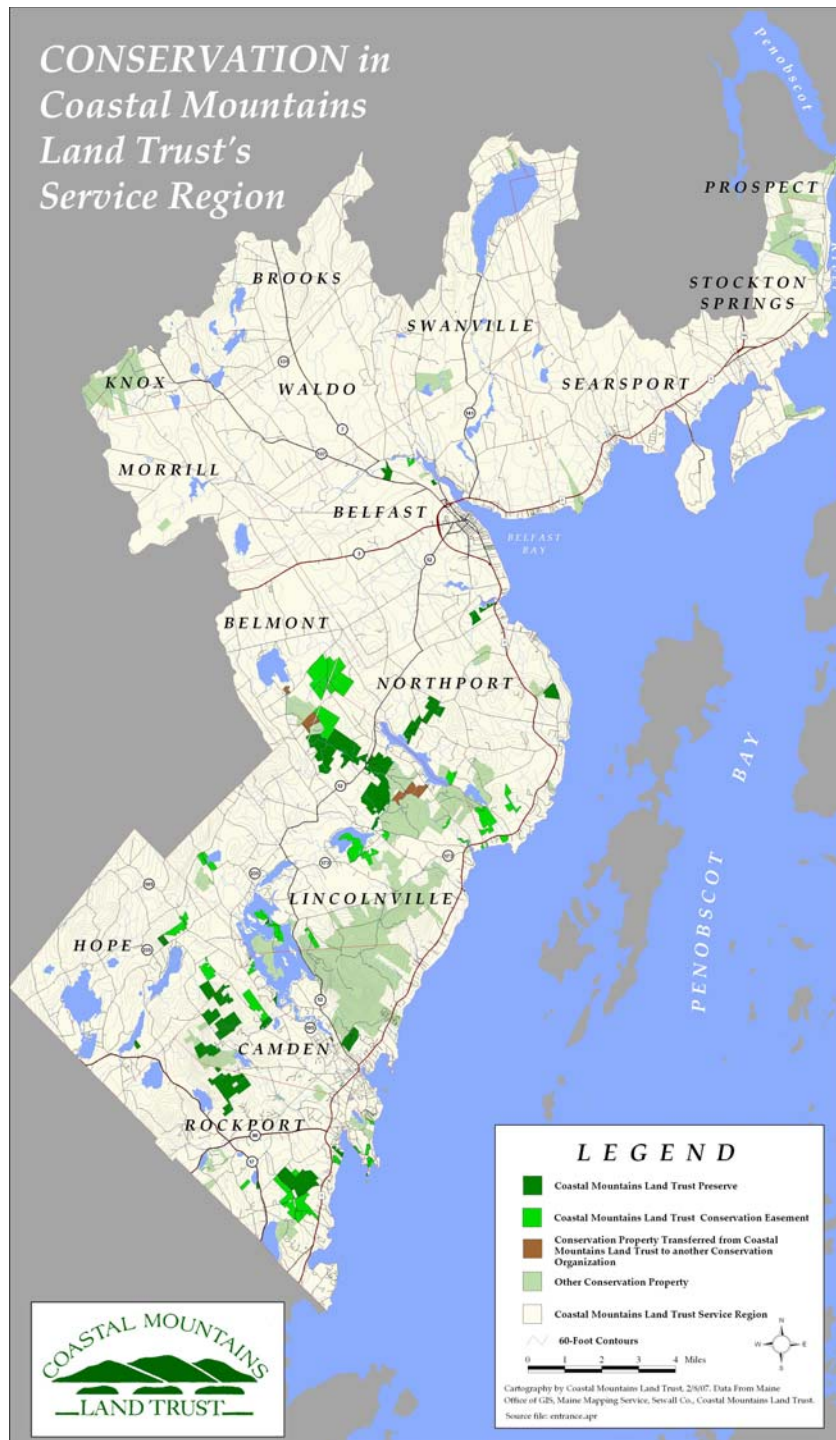
- BIOLOGICAL DIVERSITY
- SCENIC LANDSCAPES, AND
- AGRICULTURAL, FOREST, AND WATER RESOURCES



FOCAL AREAS

REGIONS OF INTEREST

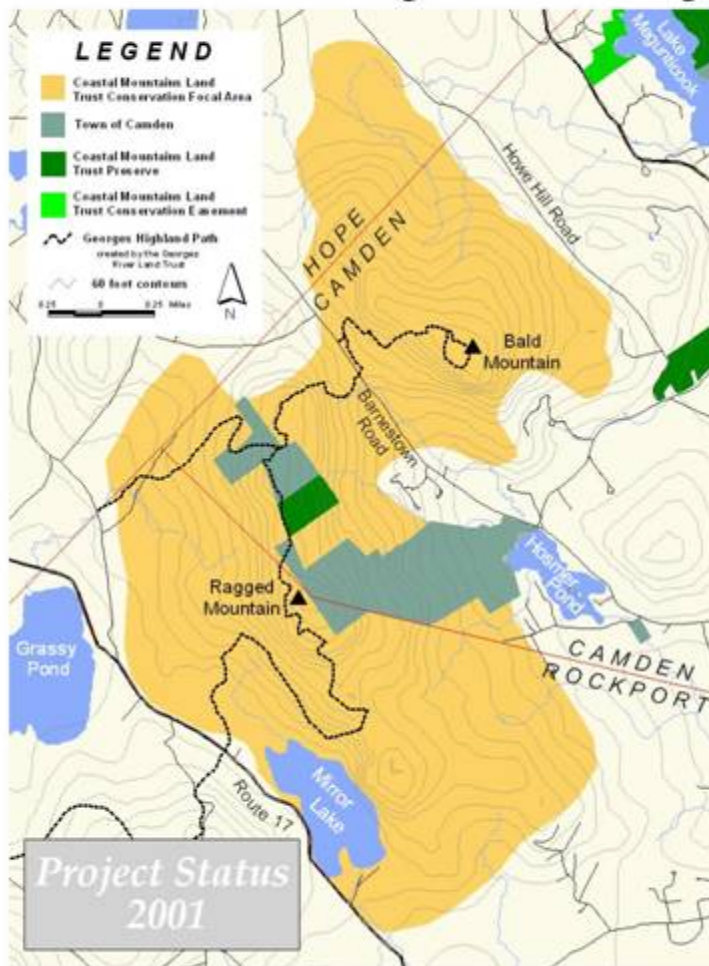




- **SIMULTANEOUS CONSERVATION PLANNING PROCESS WITH STATE AND LOCAL PARTNERS**
 - COLLABORATION ON LAND PROTECTION, STEWARDSHIP, FUNDRAISING
- **STATE WILDLIFE ACTION PLAN**
 - CAMDEN HILLS
 - BALD AND RAGGED MOUNTAINS

CONSERVATION IN THE BALD & RAGGED MOUNTAINS

Saving the last two highest unprotected mountains in the Camden Hills



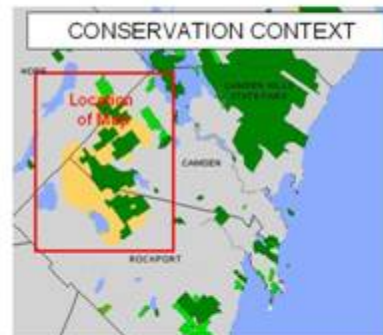
Turning Opportunity into a Natural Legacy

Coastal Mountains Land Trust has launched an ambitious initiative to conserve the Bald and Ragged Mountains, the last two highest unprotected mountains in the Camden Hills. These bold summits and their shoulders, 3,320 acres of dramatically scenic cliffs and forests, offer a broad diversity of community and conservation benefits.

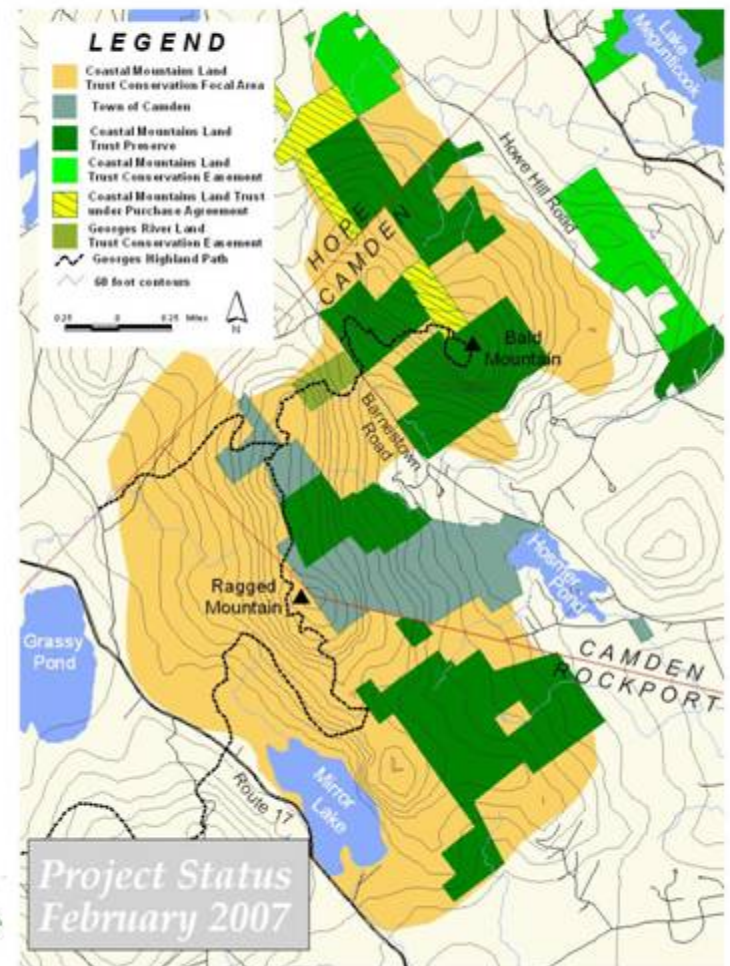
Conservation of the Bald and Ragged Mountains will permanently:

- provide new opportunities for outdoor recreation based from the Camden Snow Bowl
- conserve rare plants, exemplary natural communities, and large unfragmented areas of wildlife habitat
- permanently protect and expand existing trails, many of which are currently on private land by permission, to assure continuing public access
- preserve the dramatic scenery of this mountainous terrain that frames the horizons above our towns
- protect undeveloped, forested land on Ragged Mountain that is in the watershed of Mirror Lake, part of the drinking water supply for our community.

We are working cooperatively and voluntarily with the land owners of these exceptional mountains to design mutually beneficial ways to conserve these properties.



Cartography by:
Created
February 1, 2007
progressbr.apr





“A ROCKPORT MAN
HAS ACTUALLY DONE
THE IMPOSSIBLE.”

-DOWN EAST MAGAZINE,
MARCH 2005

WHY PLAN?

- EFFECTIVE LAND PROTECTION PROGRAM
- CLEAR GOALS TO DISCUSS WITH LANDOWNERS AND SUPPORTERS
- LASTING STEWARDSHIP OF CONSERVATION VALUES

