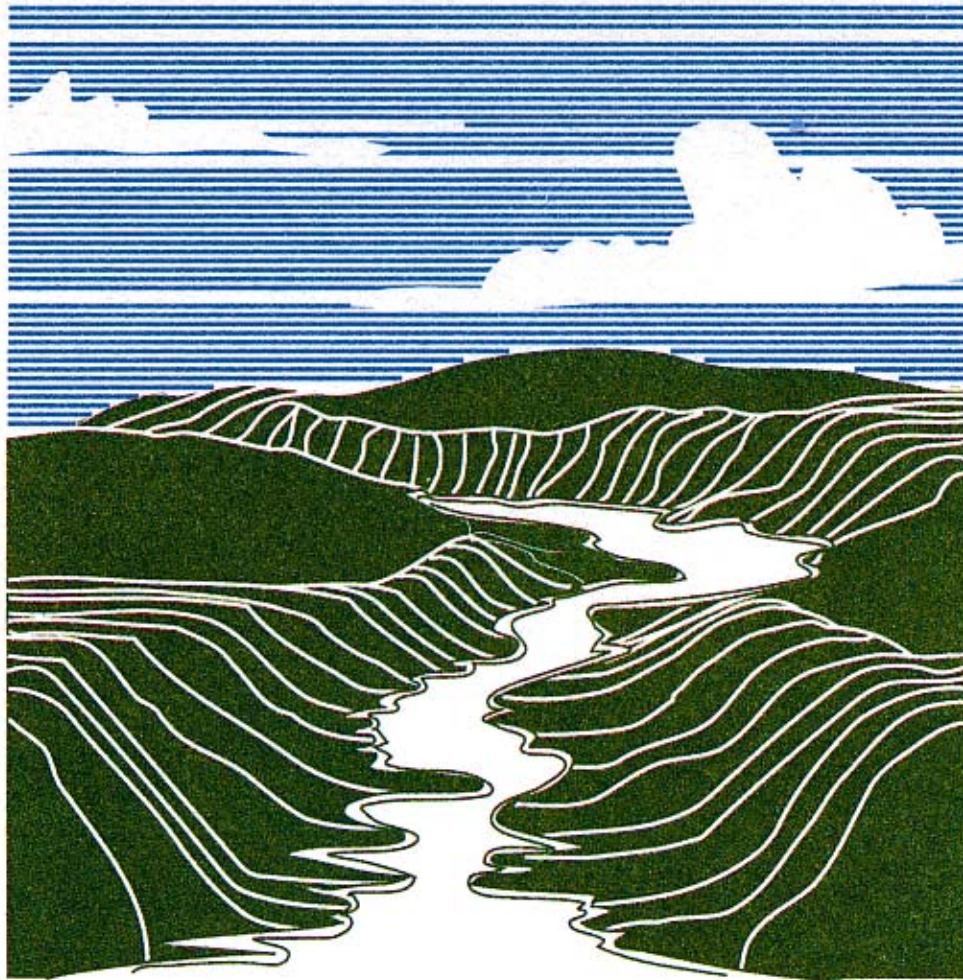


Blufflands Alliance



A COMMON VISION







BA Collaborators

- Driftless Area Initiative
- The Prairie Enthusiasts
- Trout Unlimited
- TNC
- TCF
- Natural Resources Foundation of Wisconsin

The mission of the of the Blufflands Alliance is to actively conserve natural, scenic, cultural, and agricultural land and water resources in the blufflands region of the Mississippi River in Illinois, Iowa, Minnesota and Wisconsin.

BA Accomplishments

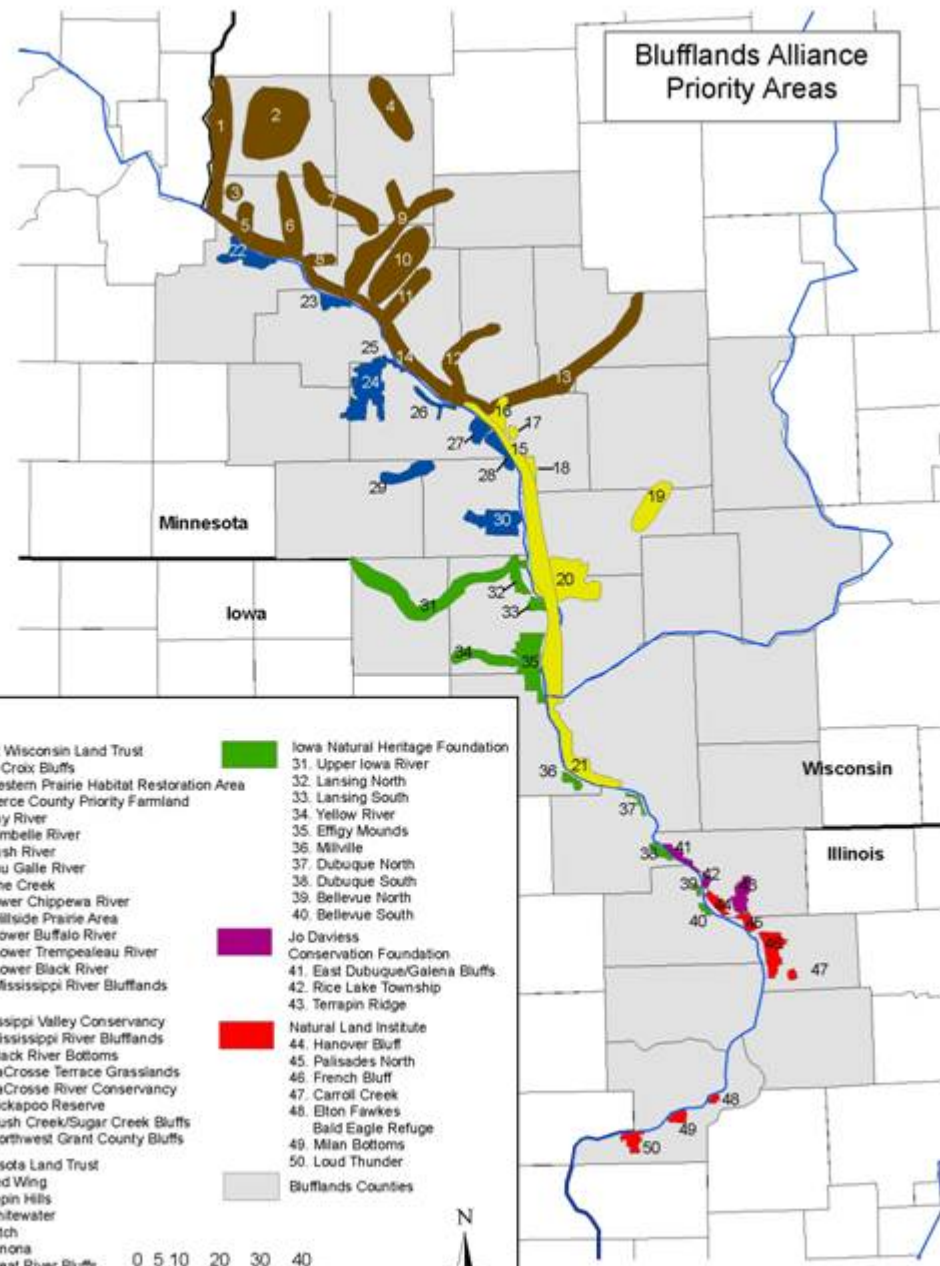
- Brought together over a 130 years of collective conservation experience
- We've worked together as an alliance for 13 years so far
- Protected 25,000 acres on 200 sites valued at over 40 million dollars
- Leveraged an additional 30 million dollars in state, federal and local funds for conservation

Strategic Conservation

1. Blufflands
2. TNC Ecoregional Plan
3. State Wildlife Action Plan
4. Gatherwaters Facilitate Process
5. Other state plans: Land Legacy Report
6. Individual Land Trust Priorities



Blufflands Alliance Priority Areas



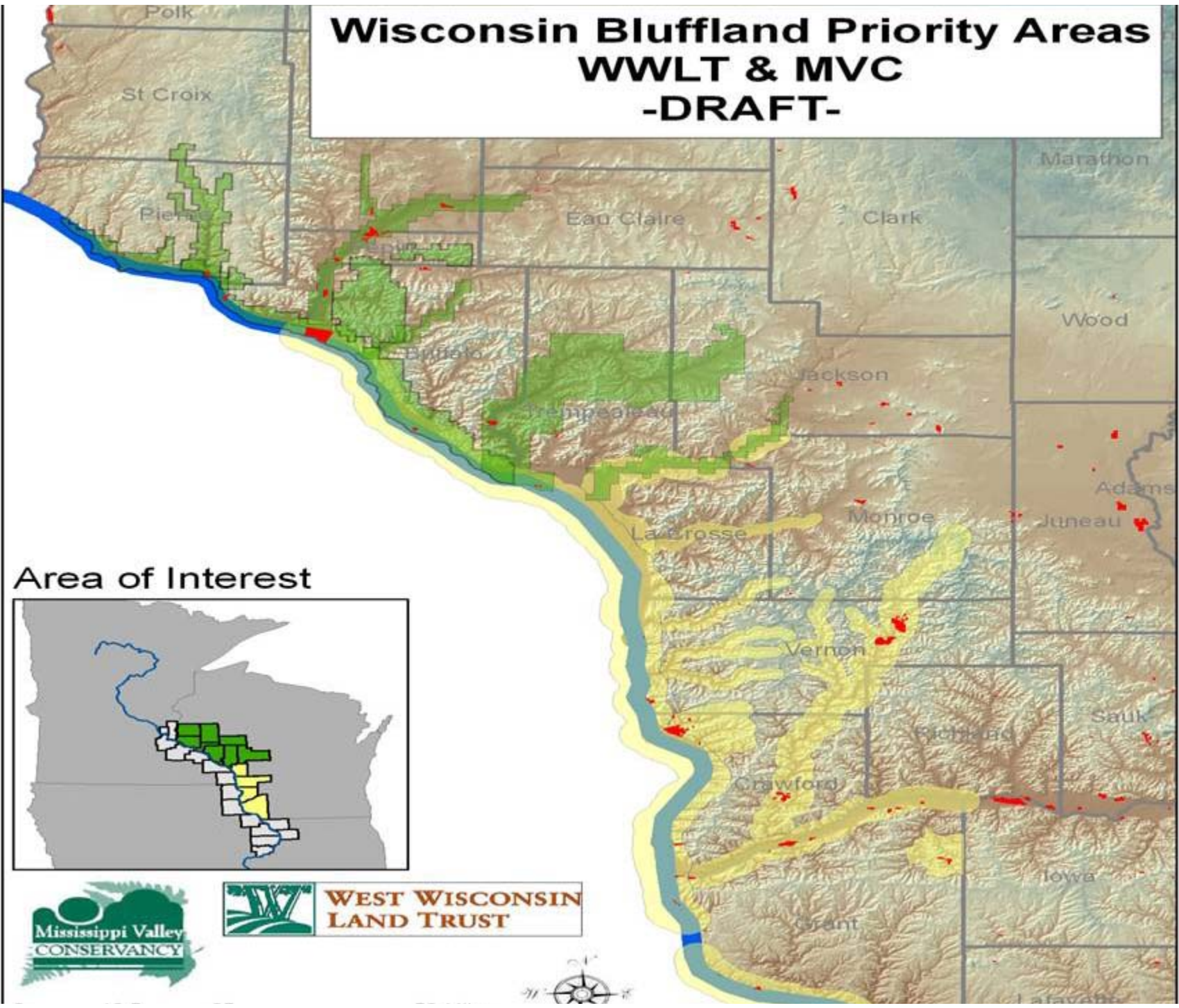
Key:

West Wisconsin Land Trust	Iowa Natural Heritage Foundation
1. St Croix Bluffs	31. Upper Iowa River
2. Western Prairie Habitat Restoration Area	32. Lansing North
3. Pierce County Priority Farmland	33. Lansing South
4. Hay River	34. Yellow River
5. Trimble River	35. Effigy Mounds
6. Rush River	36. Milville
7. Eau Galle River	37. Dubuque North
8. Pine Creek	38. Dubuque South
9. Lower Chippewa River	39. Bellevue North
10. Hillside Prairie Area	40. Bellevue South
11. Lower Buffalo River	
12. Lower Trempealeau River	Jo Daviess Conservation Foundation
13. Lower Black River	41. East Dubuque/Galena Bluffs
14. Mississippi River Blufflands	42. Rice Lake Township
	43. Terrapin Ridge
Mississippi Valley Conservancy	Natural Land Institute
15. Mississippi River Blufflands	44. Hanover Bluff
16. Black River Bottoms	45. Palisades North
17. LaCrosse Terrace Grasslands	46. French Bluff
18. LaCrosse River Conservancy	47. Carroll Creek
19. Kickapoo Reserve	48. Elton Fawkes Bald Eagle Refuge
20. Rush Creek/Sugar Creek Bluffs	49. Milan Bottoms
21. Northwest Grant County Bluffs	50. Loud Thunder
Minnesota Land Trust	Blufflands Counties
22. Red Wing	
23. Pepin Hills	
24. Whitewater	
25. Latch	
26. Winona	
27. Great River Bluffs	
28. Apple Blossom Drive	
29. Rushford Sand Barrens	
30. Crooked Creek	

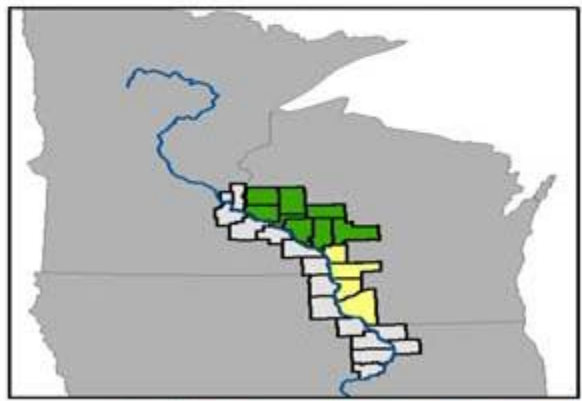
0 5 10 20 30 40 Miles

August 2006

Wisconsin Bluffland Priority Areas WWLT & MVC -DRAFT-

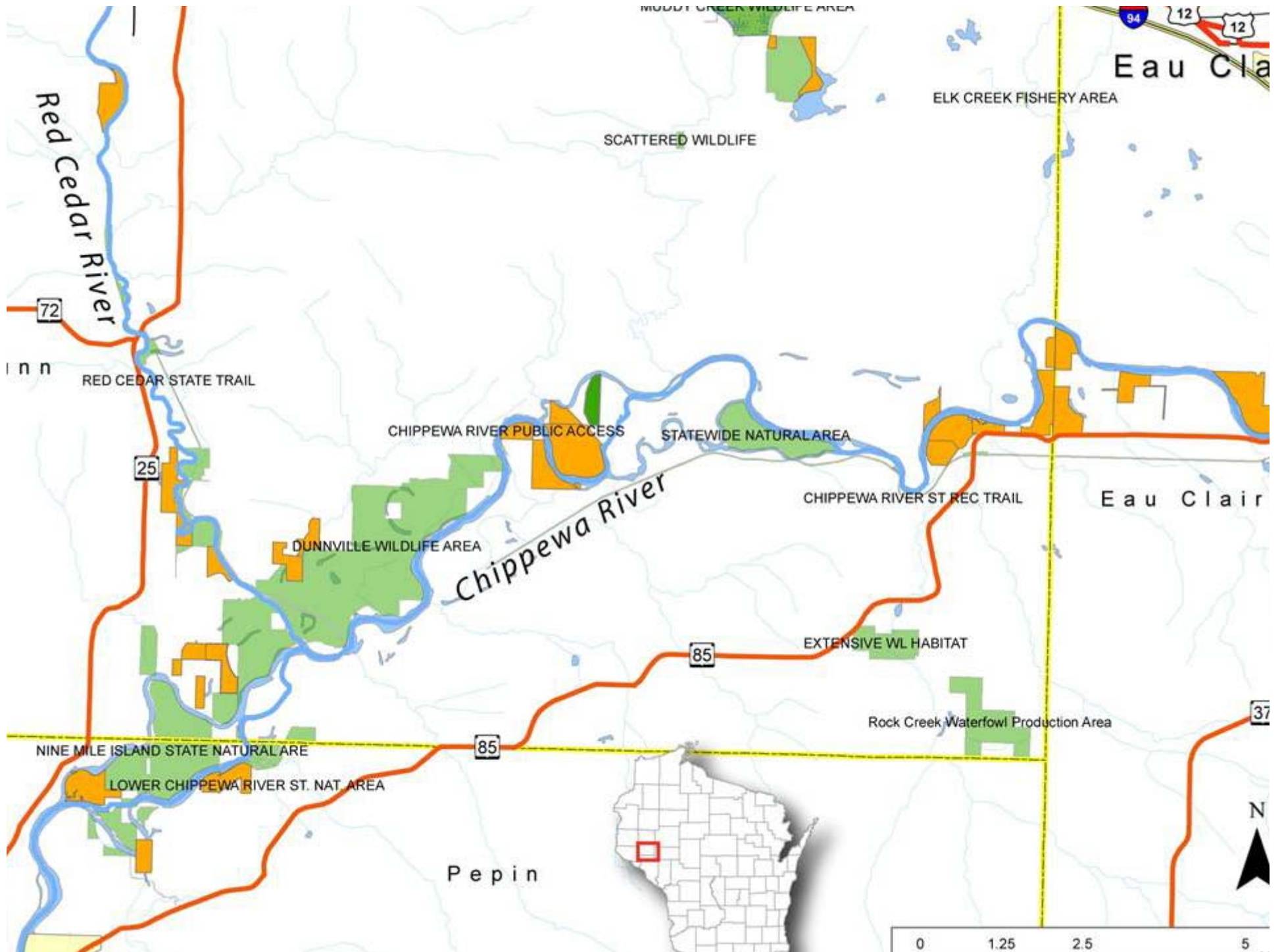


Area of Interest



**WEST WISCONSIN
LAND TRUST**





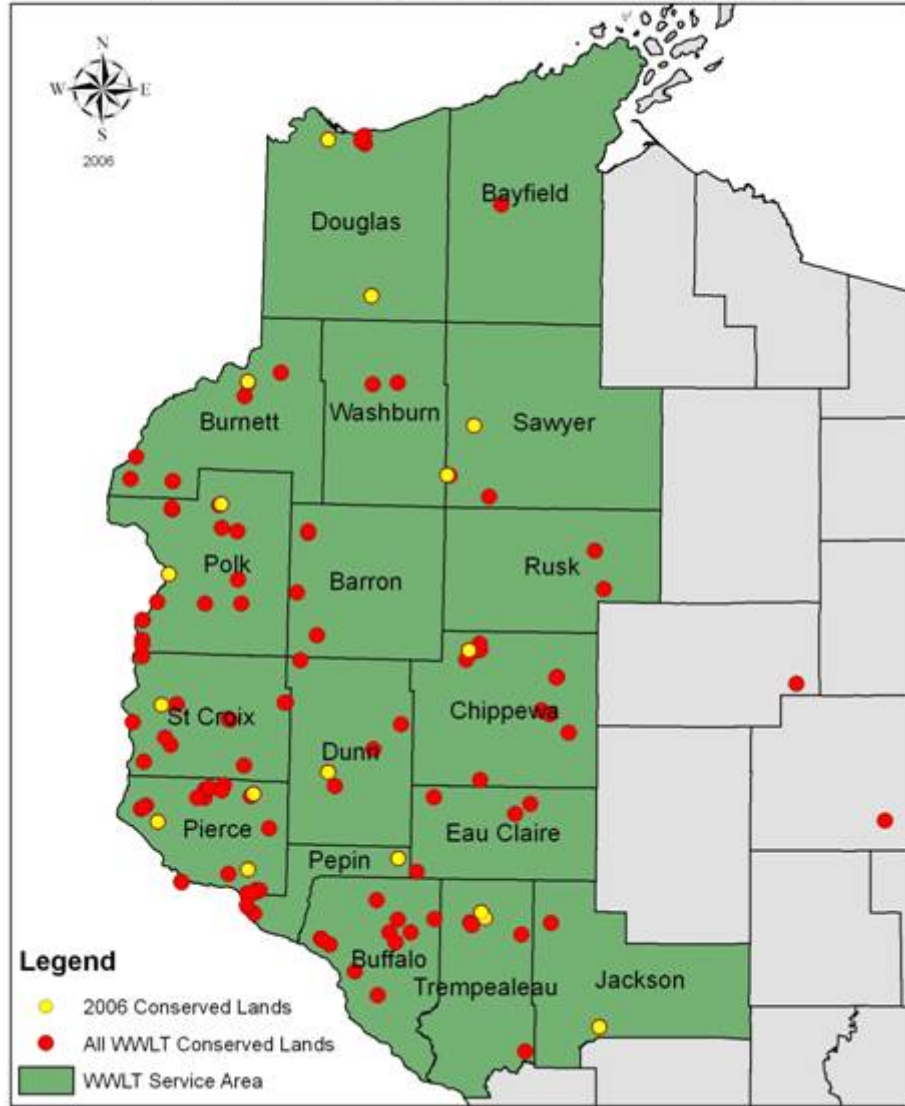
West Wisconsin Land Trust

A Regional Land Trust
Since 1988



Inform Facilitate Partner Protect

West Wisconsin Land Trust Conserved Lands



Pine Creek - Pierce County



Using the Whole Tool Box

- Donated CE started watershed protection
- Planning and evaluation of the watershed
- Acquisition of key parcels using:
 - Knowles Nelson Stewardship Fund 500k
 - DNR River Protection Grant 50k
 - NAWCA 250k
 - Private Foundation 100k

Using the Whole Tool Box (continued)

- Goal: Complete watershed (restoration)
 - PSGP - USFWS: restoration of oak savanna 60k
 - TU - Embrace a Stream: stream restoration 10k
 - Wild Turkey Federation 5k
 - Pheasants Forever (in kind) prairie planting 5k
 - The Prairie Enthusiasts prairie planting 5k
 - NAWCA: Stream restoration flood prevention/wetland habitat 130k
 - USFWS: Private lands funds for restoration 5k
- Education: Stream monitoring by volunteers
Education funding 0k

QuickTime™ and a
TIFF (Uncompressed) decompressor
are needed to see this picture.

QuickTime™ and a
TIFF (Uncompressed) decompressor
are needed to see this picture.

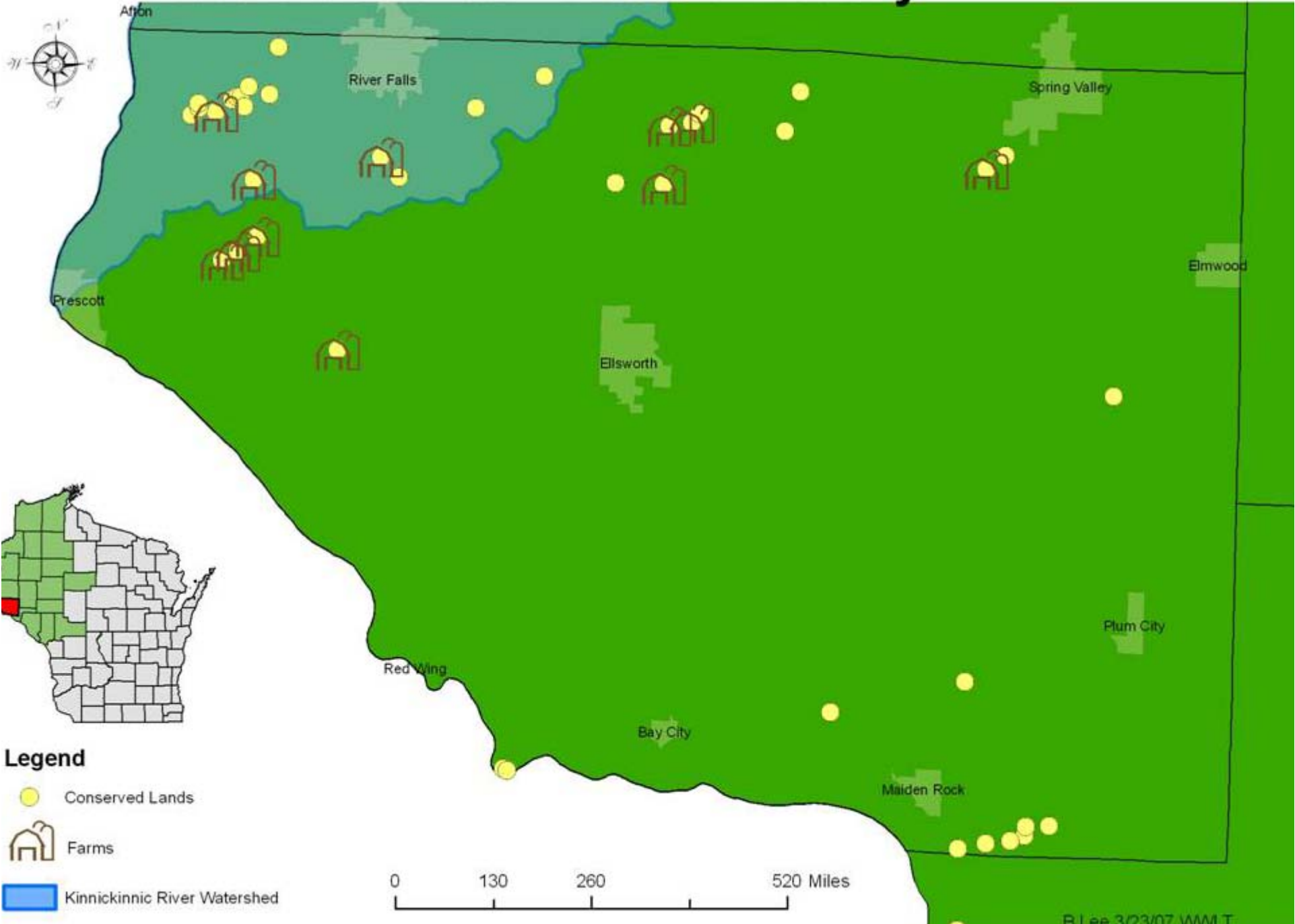
Agricultural Land




Farmland Preservation

- Targeted Area due to Sprawl
- Cooperate with Agencies/Organizations
- Farmer must donate some value
- Leverage USDA- FRPP funds
- Leverage Private Funds


Farms Forever - Pierce County



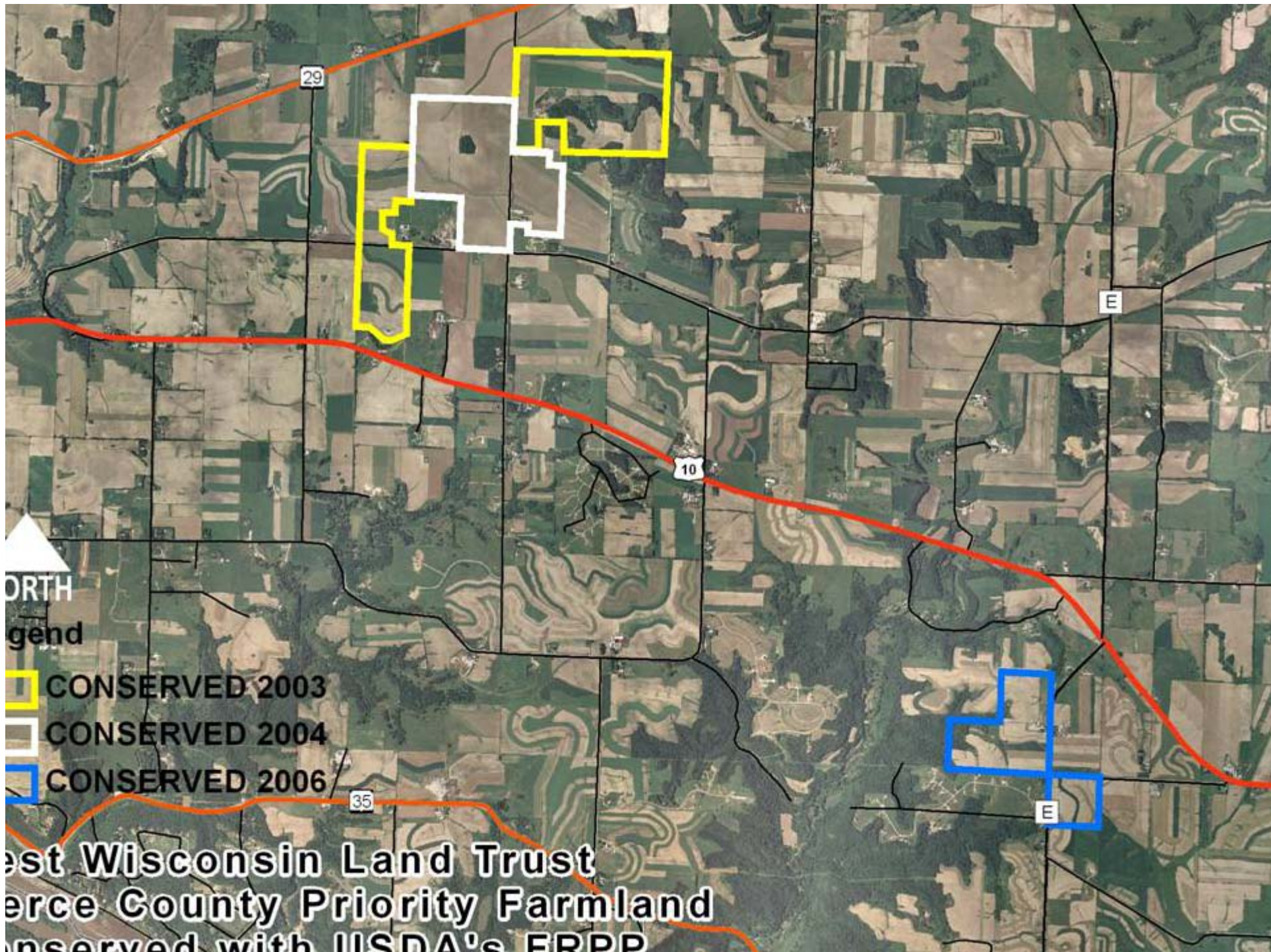
Legend

 Conserved Lands

 Farms

 Kinnickinnic River Watershed

B Lee 3/23/07 WMLT





Maiden Rock Bluff SNA

- Oak Savanna Restoration
- Barb Wire Fence
- Trail improvements continued
- Nature Run/Walk Event with Apple Orchard
- Kiosk Finished early '06



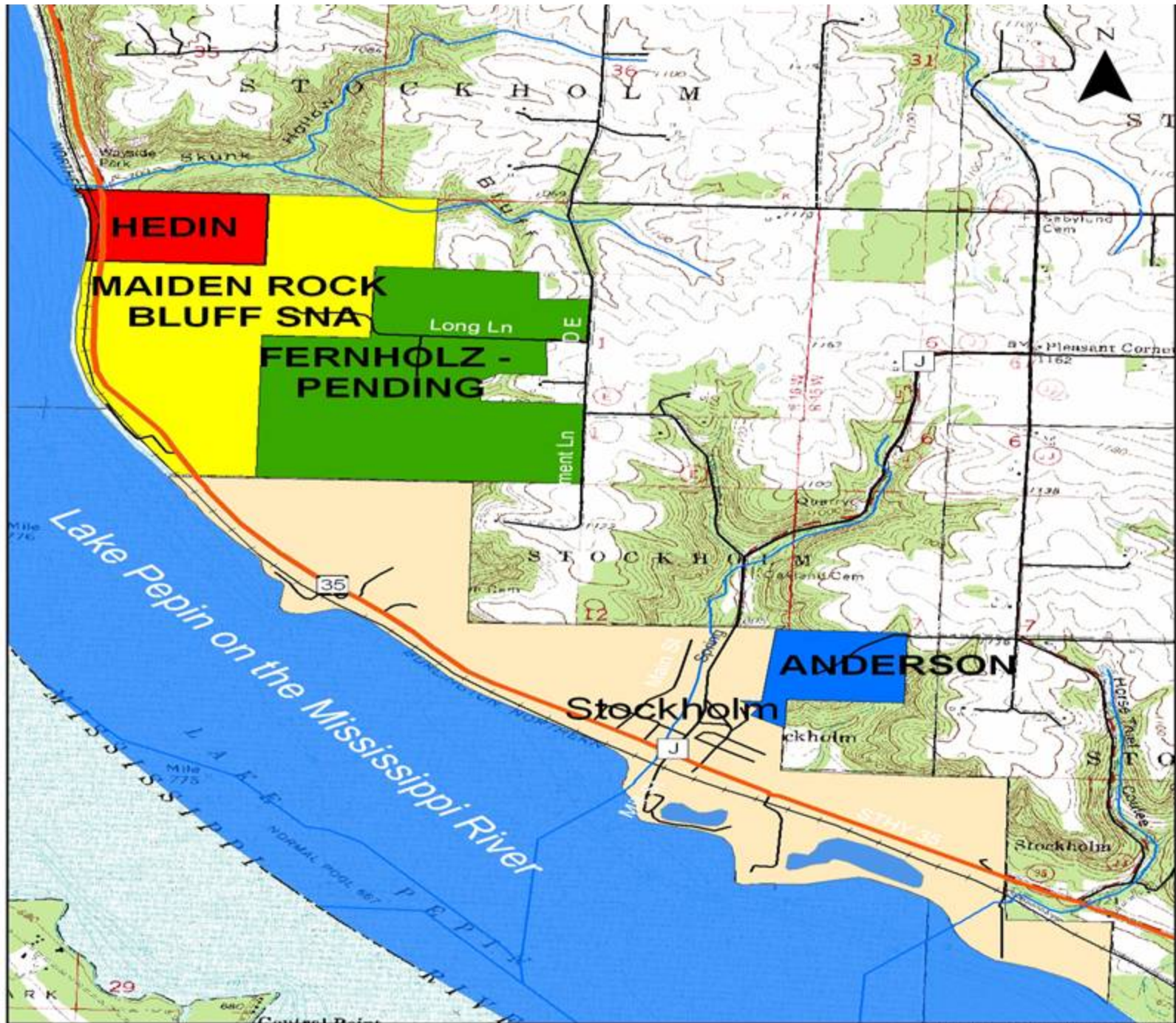






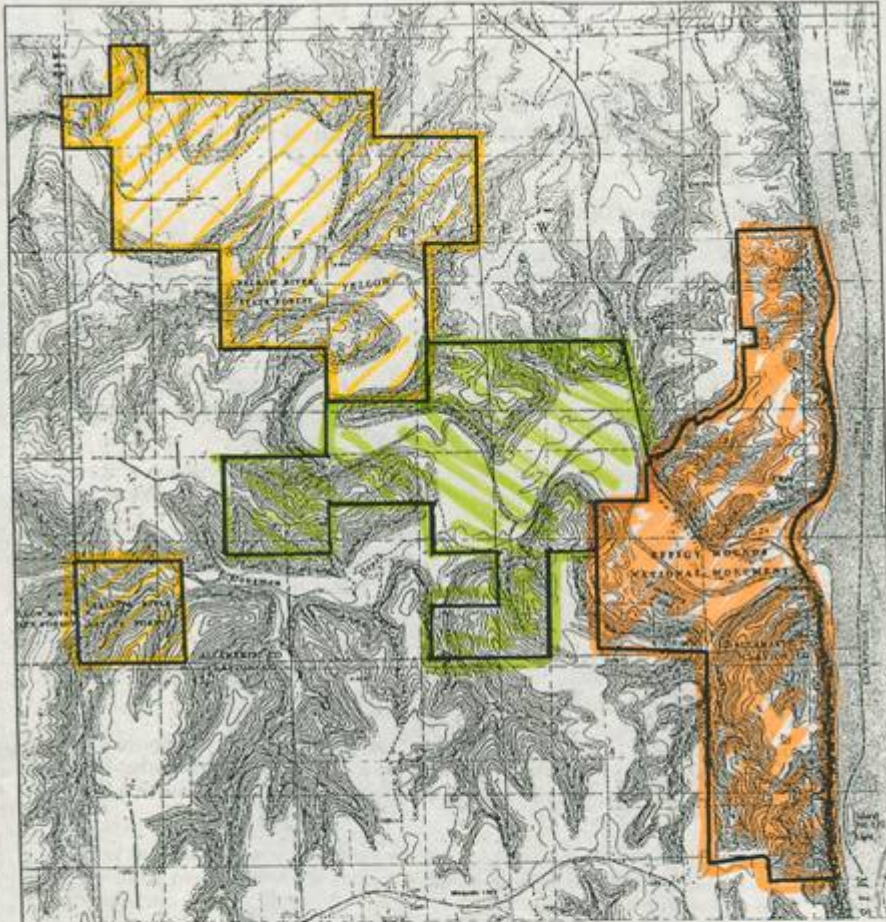


Maiden's Rock, on the Mississppi.






Iowa Natural Heritage Foundation Project Example





Effigy Mounds National Monument
Boundary Expansion



-  Effigy Mounds National Monument
-  Kistler/Ferguson Tract
(INHP Heritage Addition)
-  Yellow River State Forest



Note: Boundaries are approximate

Heritage Addition to Effigy Mounds National Monument

- 1045 Acres
- Connects Effigy Mounds National Monument to Yellow River State Forest
- Identified as a priority conservation area by the State since the early 1960's
- Project cost: \$1.5 million

Project Summary

- After several years of negotiations, INHF purchased the Heritage Addition in 2000 and transferred it to the National Park Service in 2001
- Funding sources included:
 - Private Fundraising by INHF
 - State Grants (State Historic Society, Iowa Transportation Enhancement funds)
 - Federal authorization and appropriation to the National Park Service (Testimony before congress was needed to accomplish this)

Heritage Addition - Site Resources

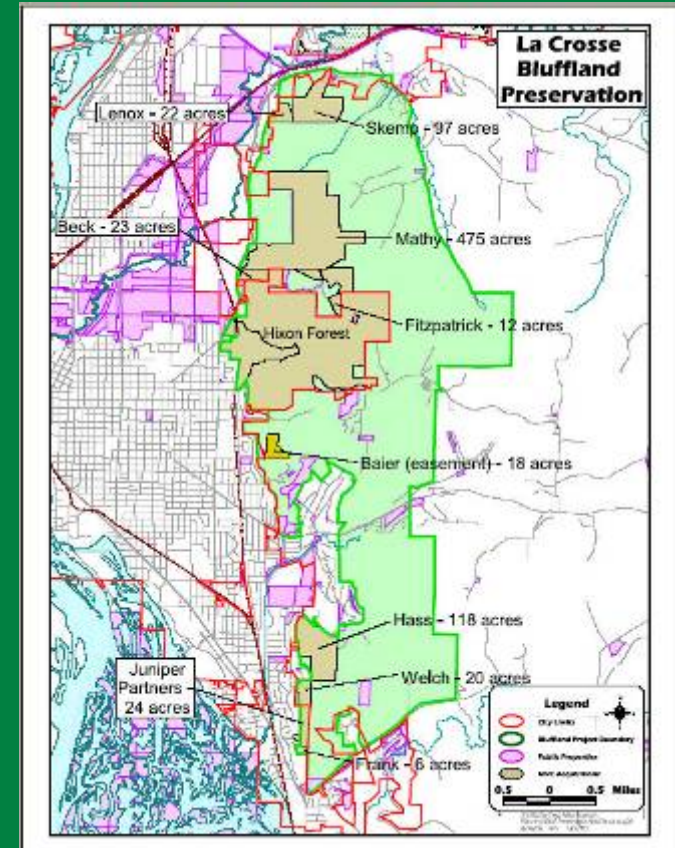
- 2.5 miles of the Yellow River
- When combined with the existing Effigy Mounds and Yellow River State Forest sites it creates a 4000 acre complex containing 7.8 miles of the Yellow River
- Archeological sites including linear mounds and bear effigies
- Located along the Great River Road National Scenic Byway
- Threatened or Endangered Species: Jeweled Shooting Star (State threatened), Red Shoulder hawk nests (State endangered), Bald Eagle nest, Northern Harrier (State threatened), Pileated Woodpecker (State threatened)

Miller Bluff – La Crosse Blufflands



La Crosse Bluffland Protection Program

Mississippi Valley Conservancy has a unique partnership with the City of La Crosse, whereby the city budgets \$250,000/year to MVC. MVC then buys bluffland properties in a 3,000-acre project area. The land gets conveyed to the city, and MVC retains a conservation easement. The city's money is leveraged by the Knowles-Nelson Stewardship Fund and private grants.



West Wisconsin Land Trust

www.WWLT.ORG



Inform Facilitate Partner Protect